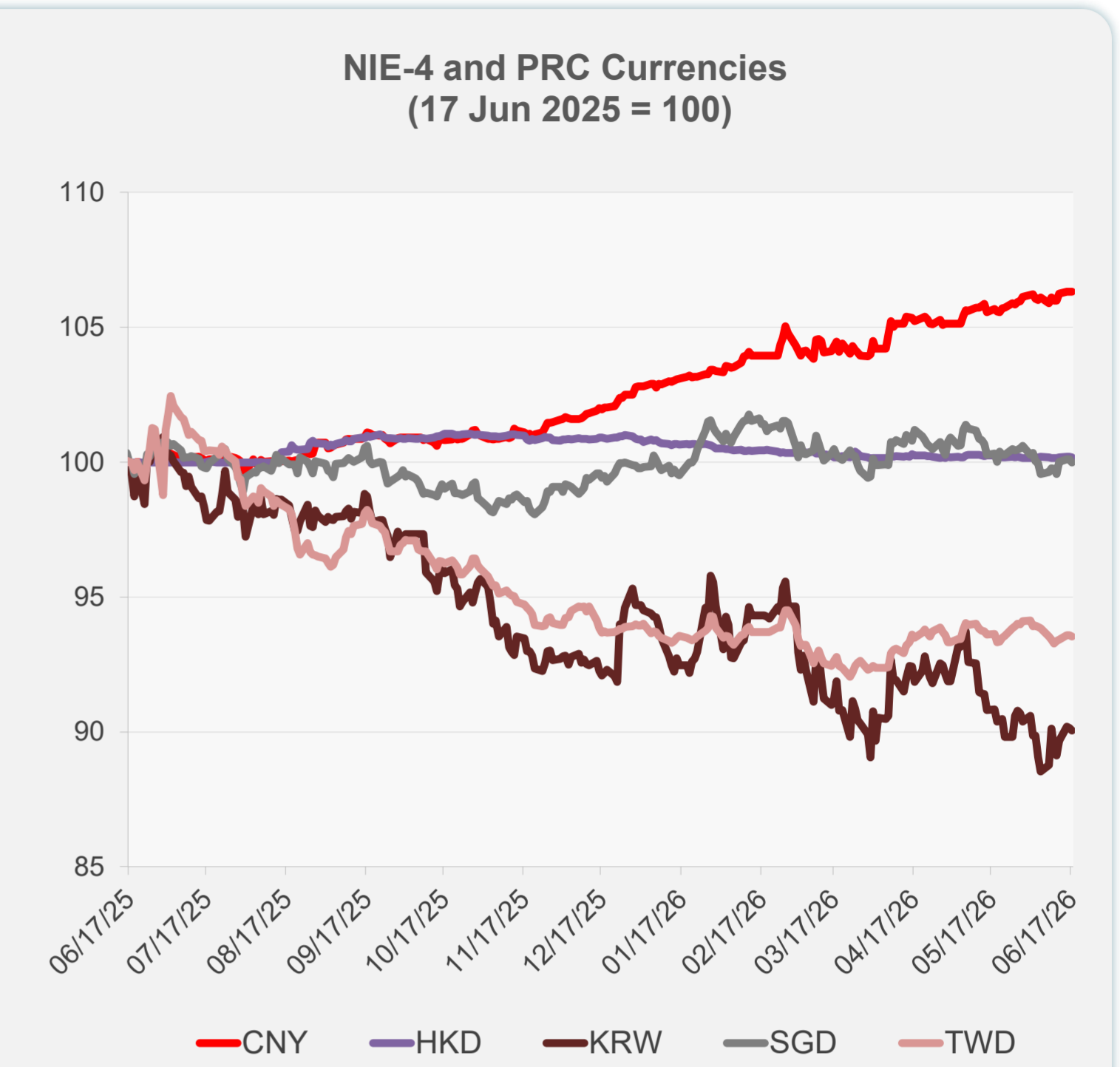
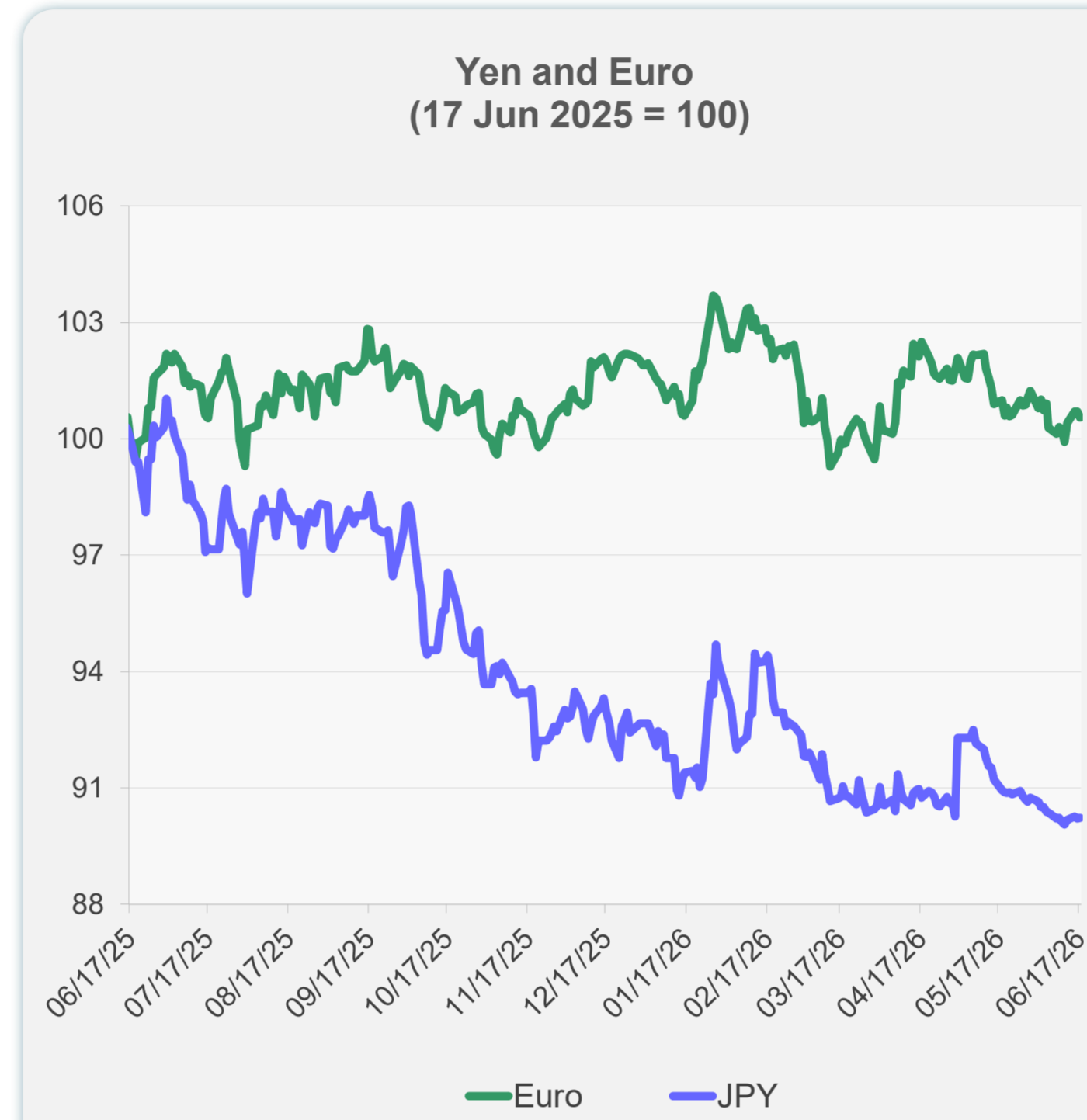
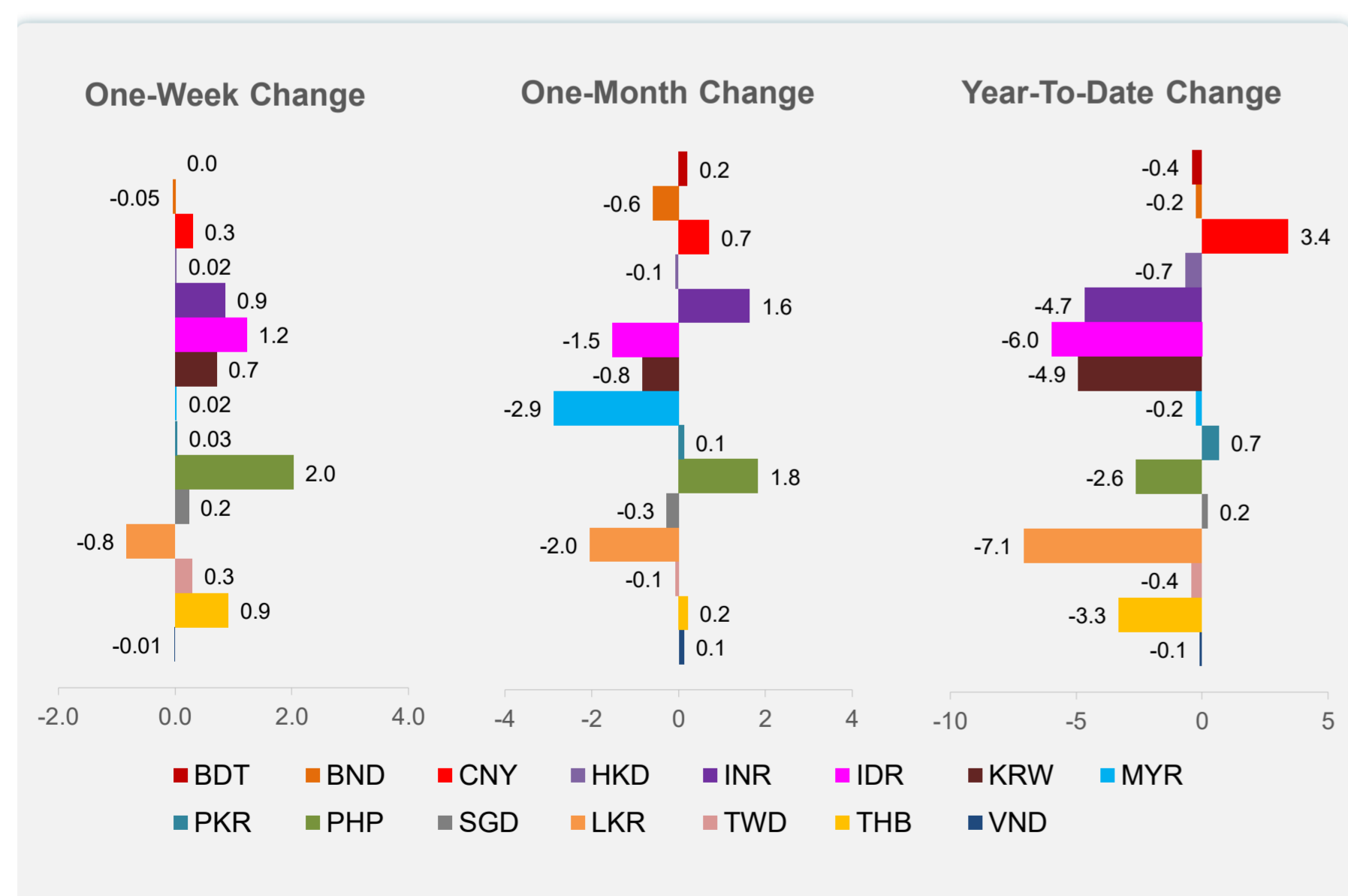
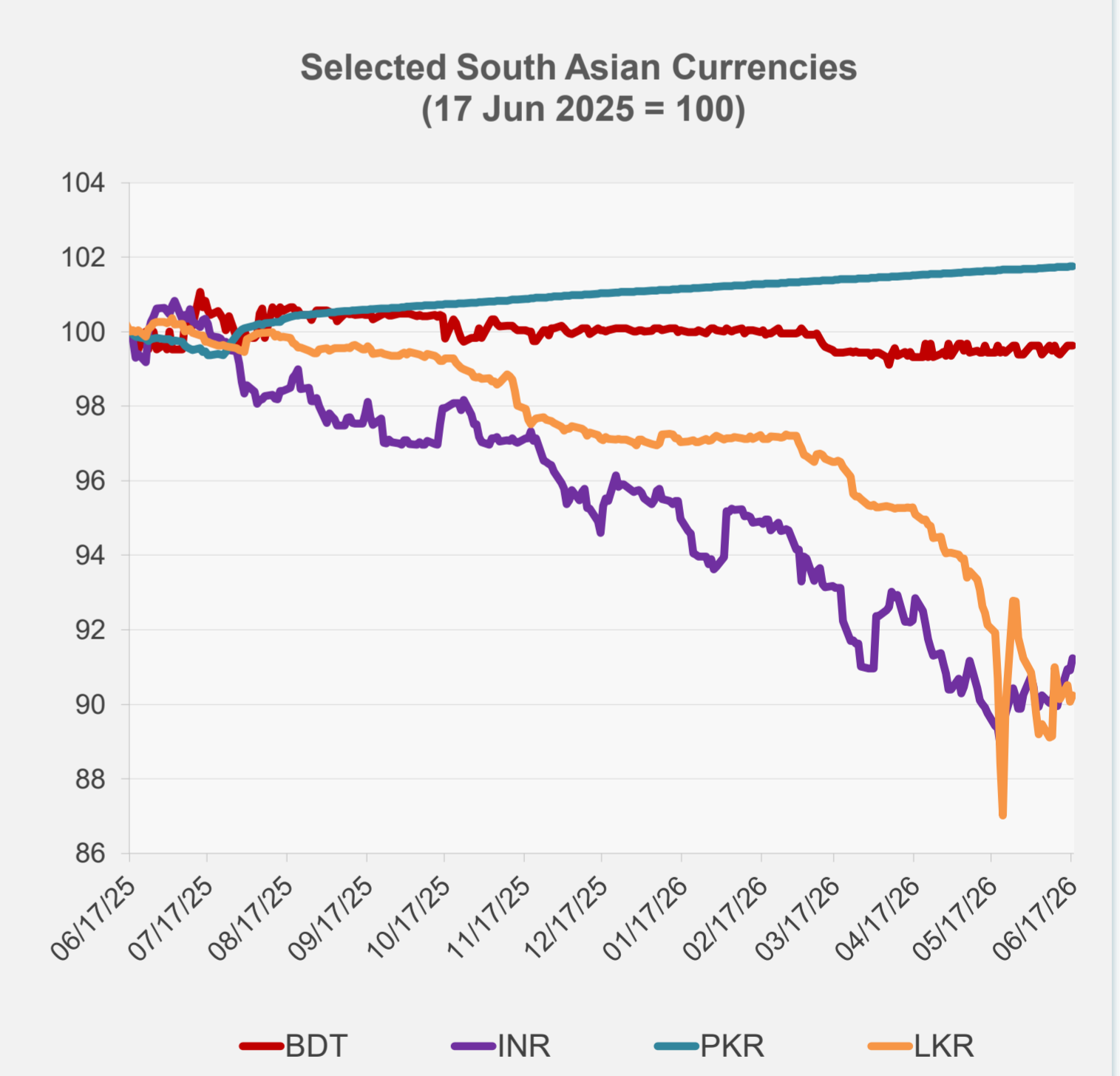
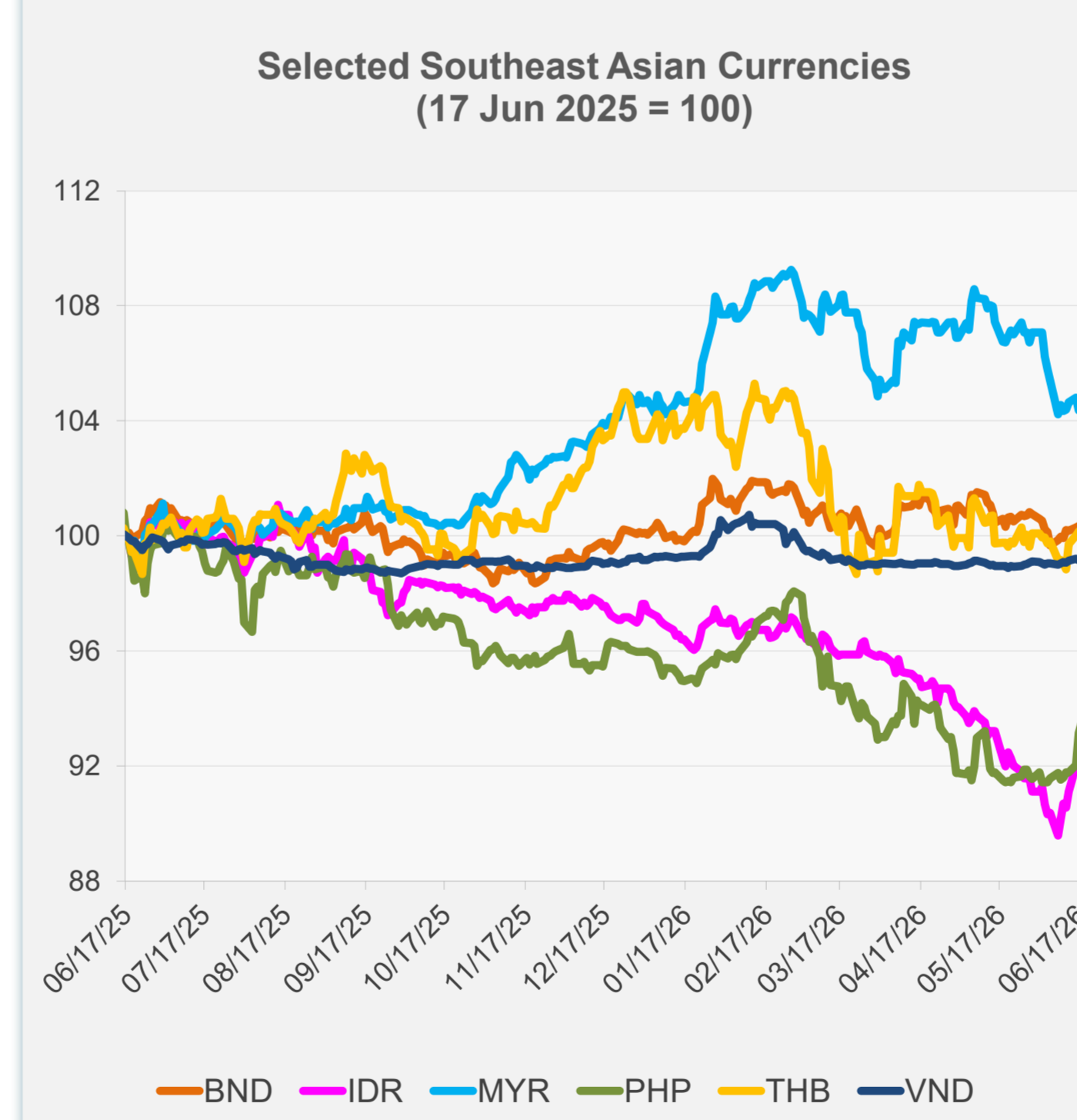


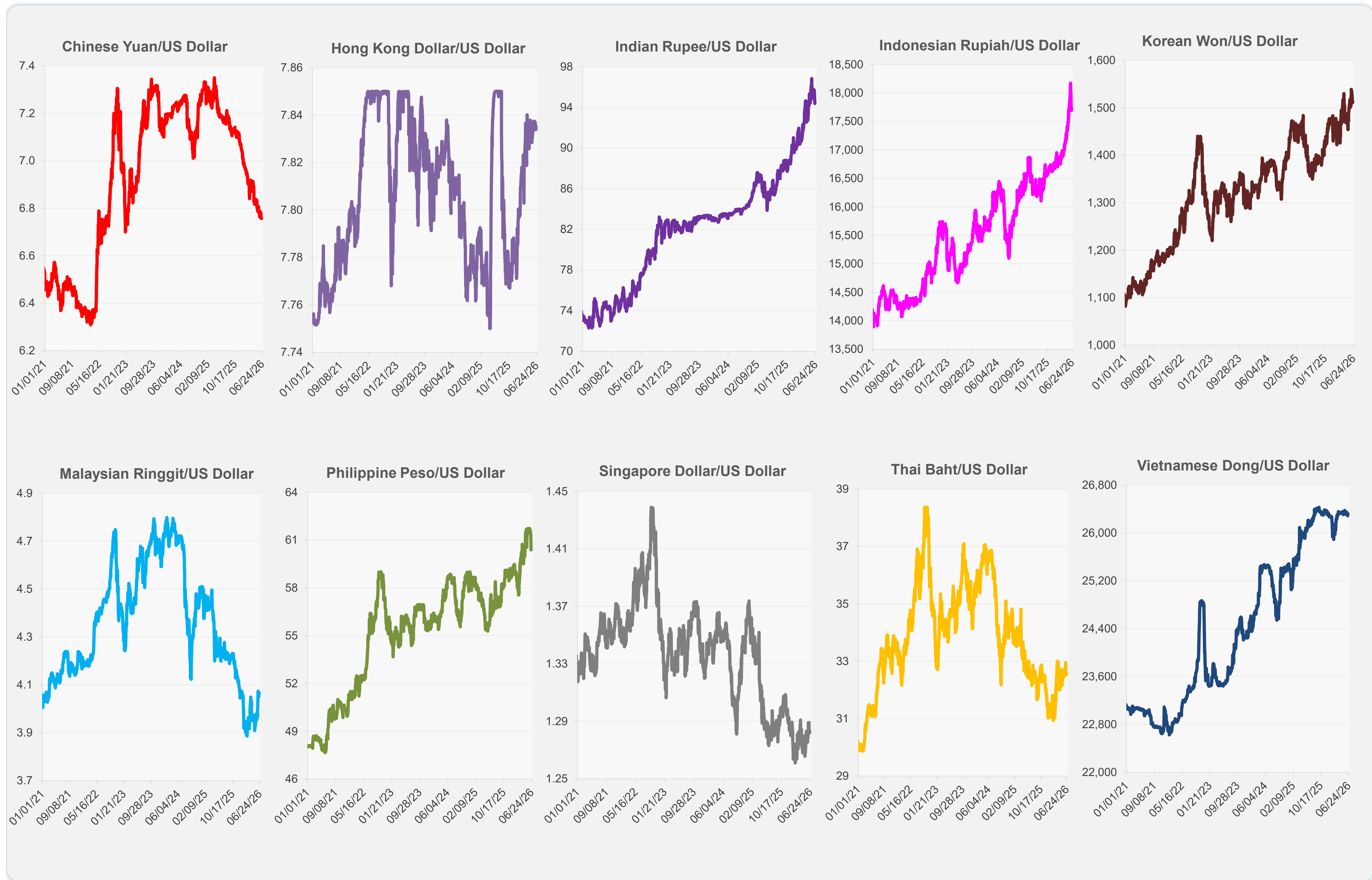
	Latest Closing	% change from Previous Day	% change from 01-Jan-26
Euro	0.86	-0.16	-1.32
Japanese yen (JPY)	160.19	0.02	-2.63
Bangladeshi taka (BDT)	122.75	0.00	-0.41
Brunei dollar (BND)	1.29	-0.47	-0.24
Chinese yuan (CNY)	6.76	0.01	3.42
Hong Kong dollar (HKD)	7.84	-0.02	-0.66
Indian rupee (INR)	94.38	0.34	-4.66
Indonesian rupiah (IDR)	17,735.00	-0.23	-5.98
Korean won (KRW)	1,513.40	-0.12	-4.92
Malaysian ringgit (MYR)	4.07	0.00	-0.25
Pakistan rupee (PKR)	278.26	0.01	0.66
Philippine peso (PHP)	60.38	0.33	-2.61
Singapore dollar (SGD)	1.28	-0.11	0.21
Sri Lanka rupee (LKR)	333.13	0.19	-7.06
Taipei,China NT dollar (TWD)	31.58	-0.05	-0.43
Thai baht (THB)	32.59	-0.21	-3.31
Vietnamese dong (VND)	26,322.50	-0.08	-0.09



NIE = Newly Industrialized Economies

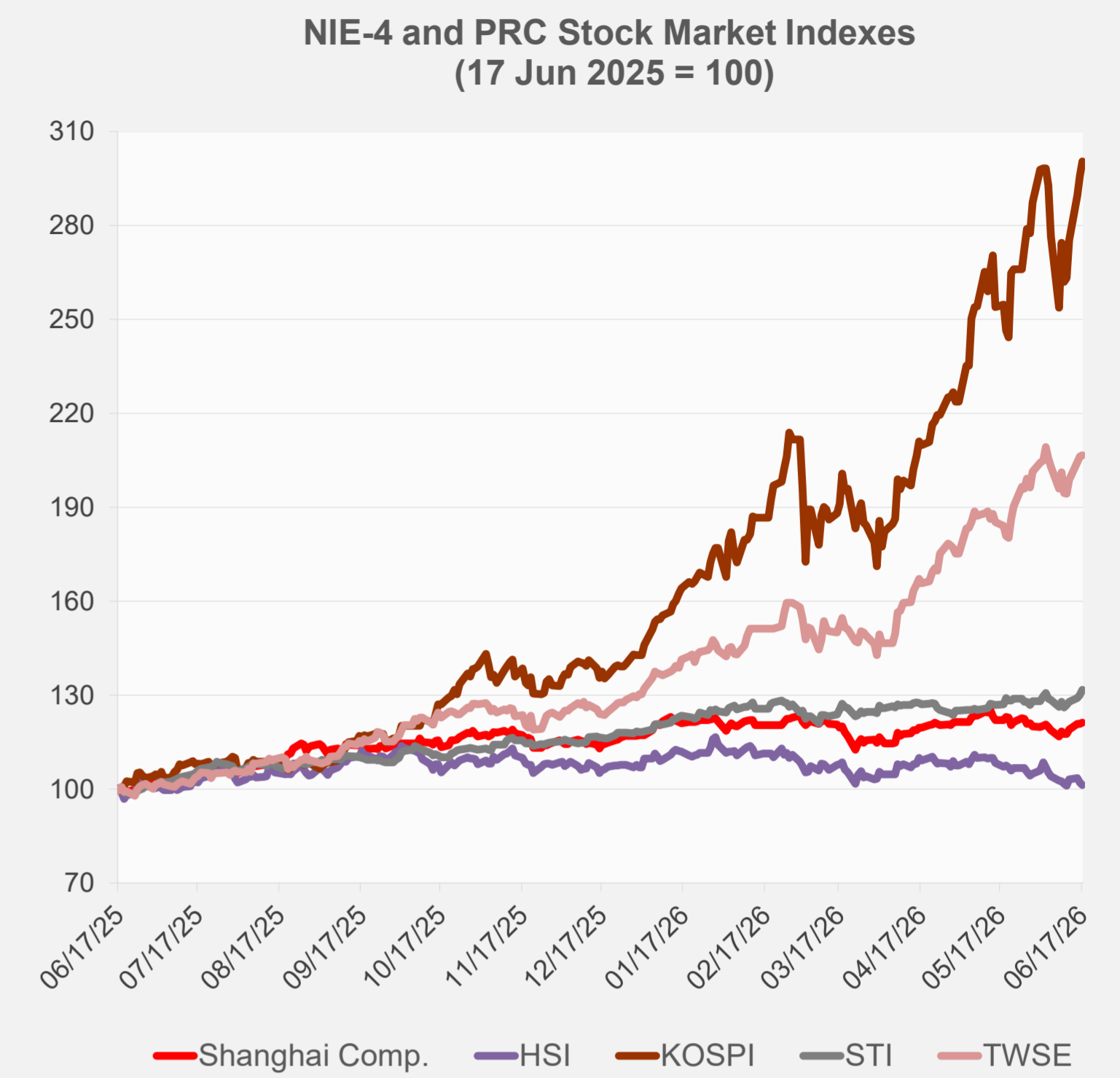


Note: Negative/Decreasing values indicate depreciation of local currency, and positive/increasing values indicate appreciation.
Source: ADB calculations using data from Bloomberg and Haver Analytics.

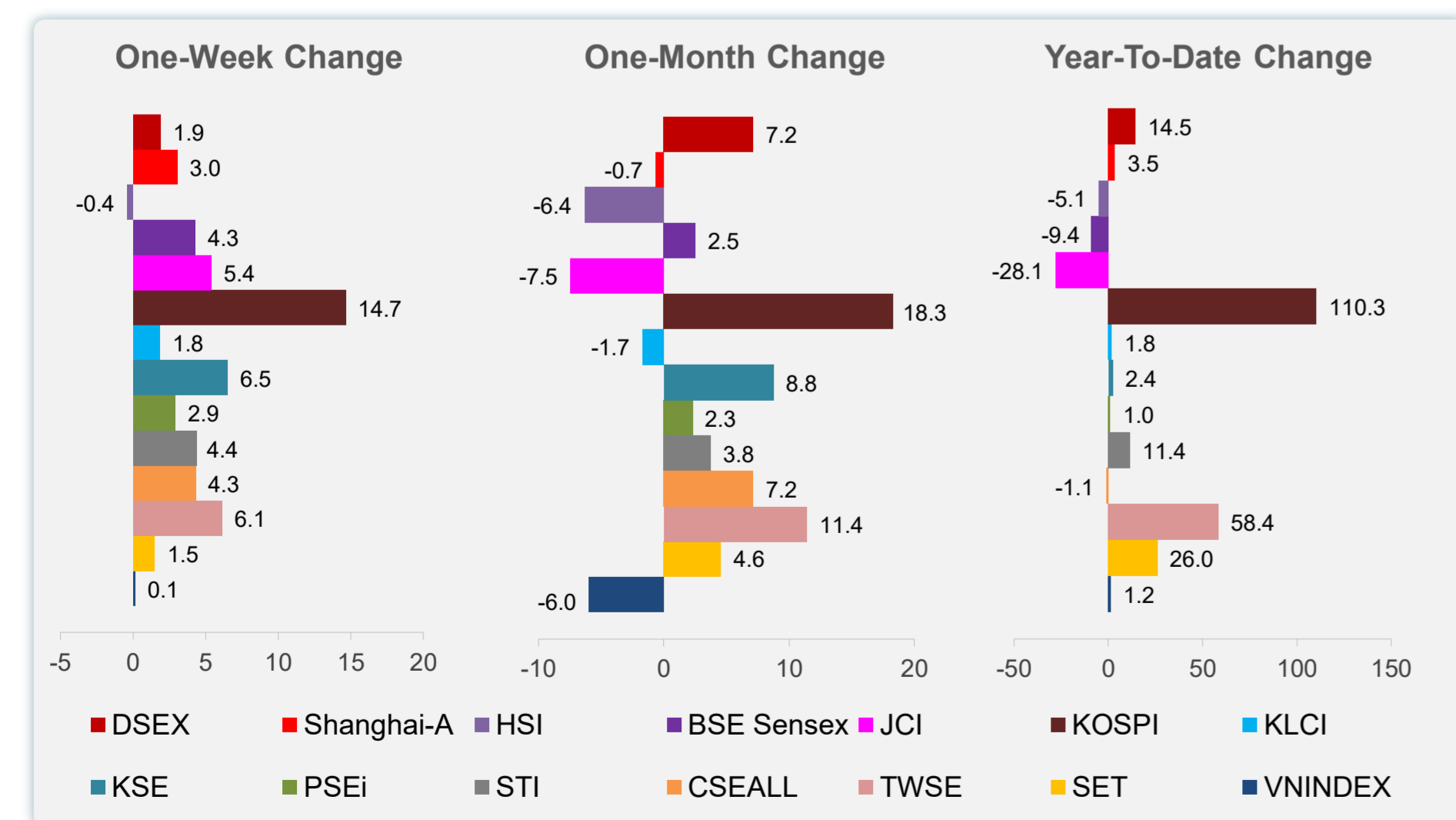
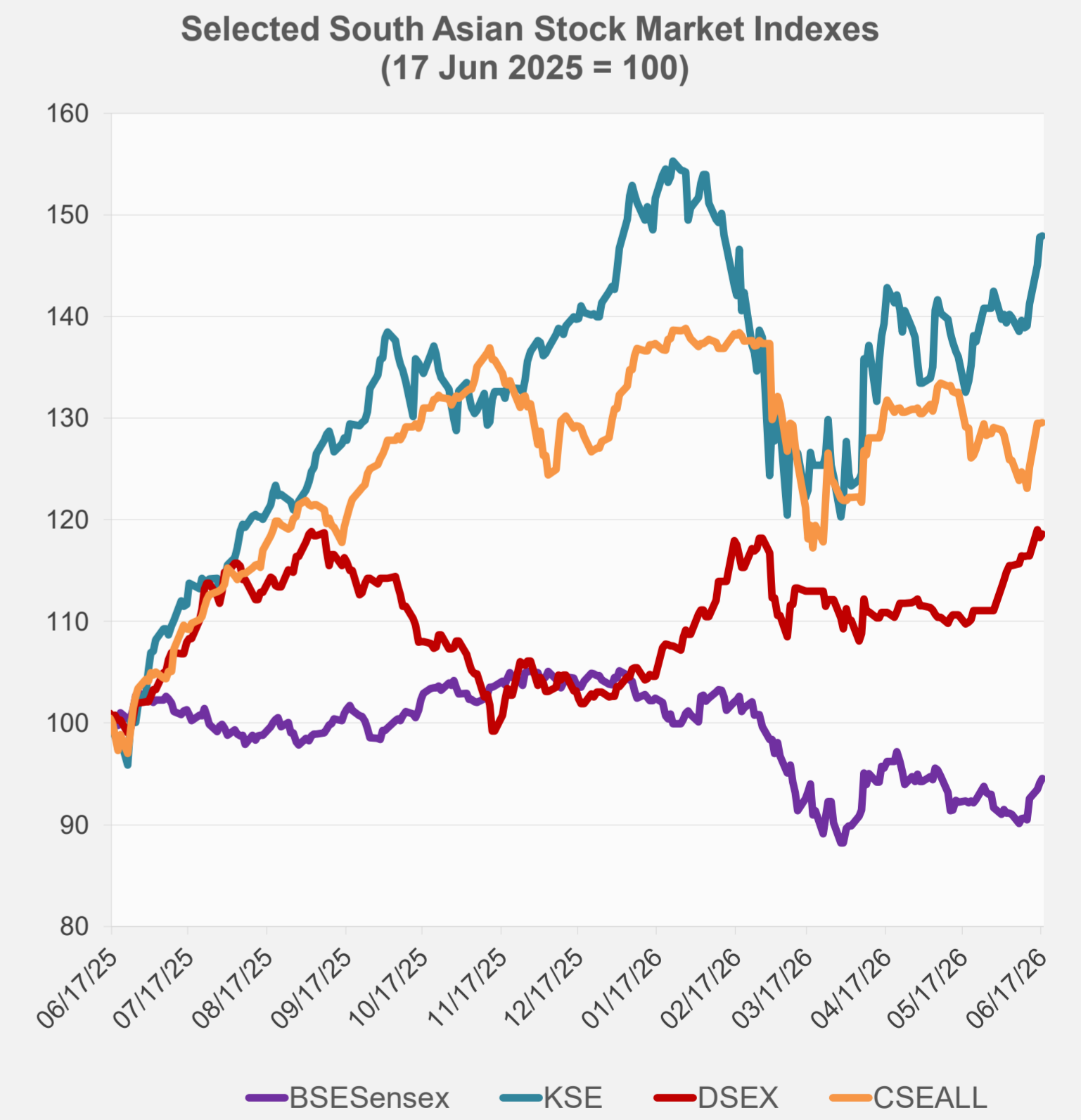
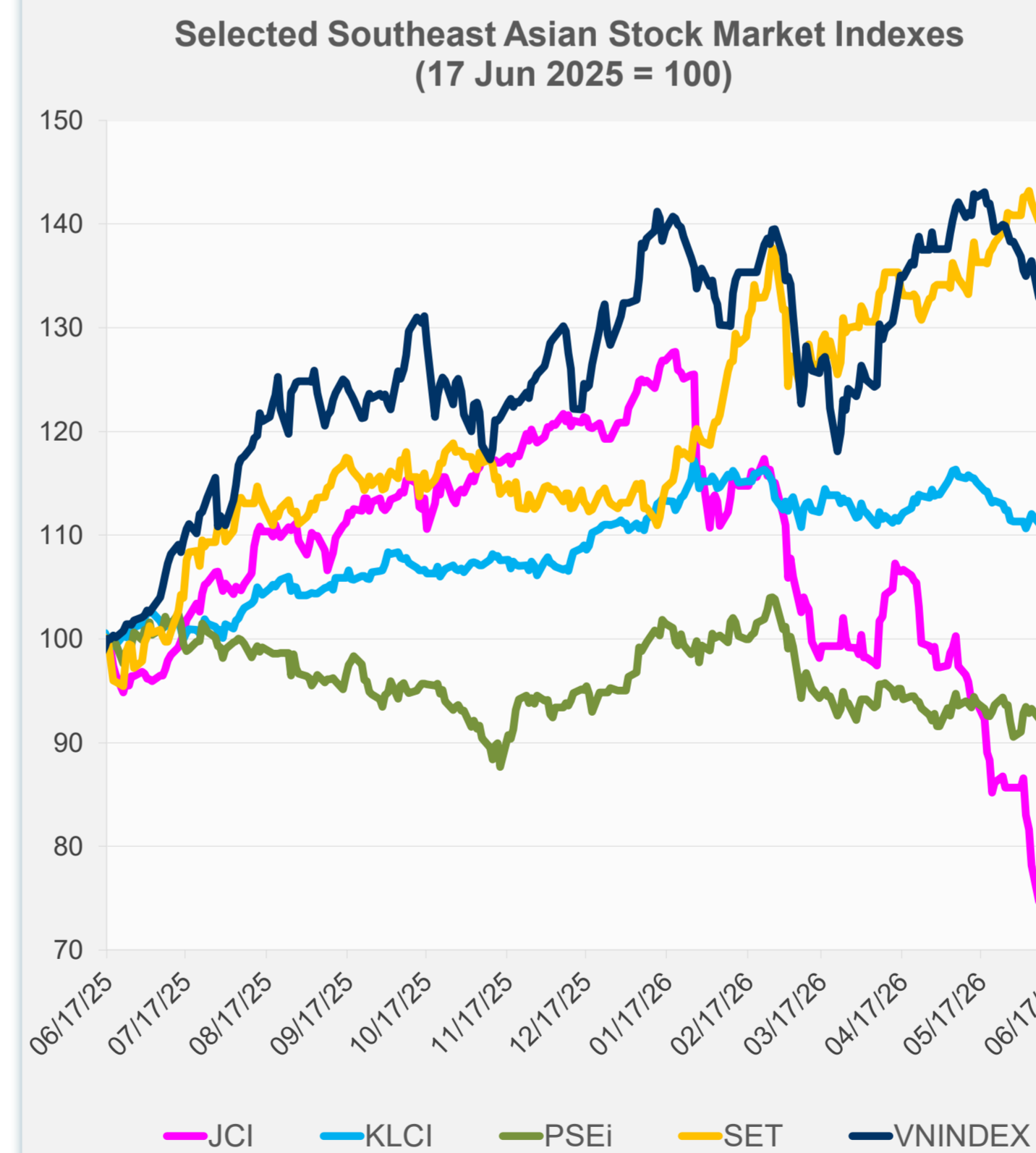


Source: Haver Analytics.

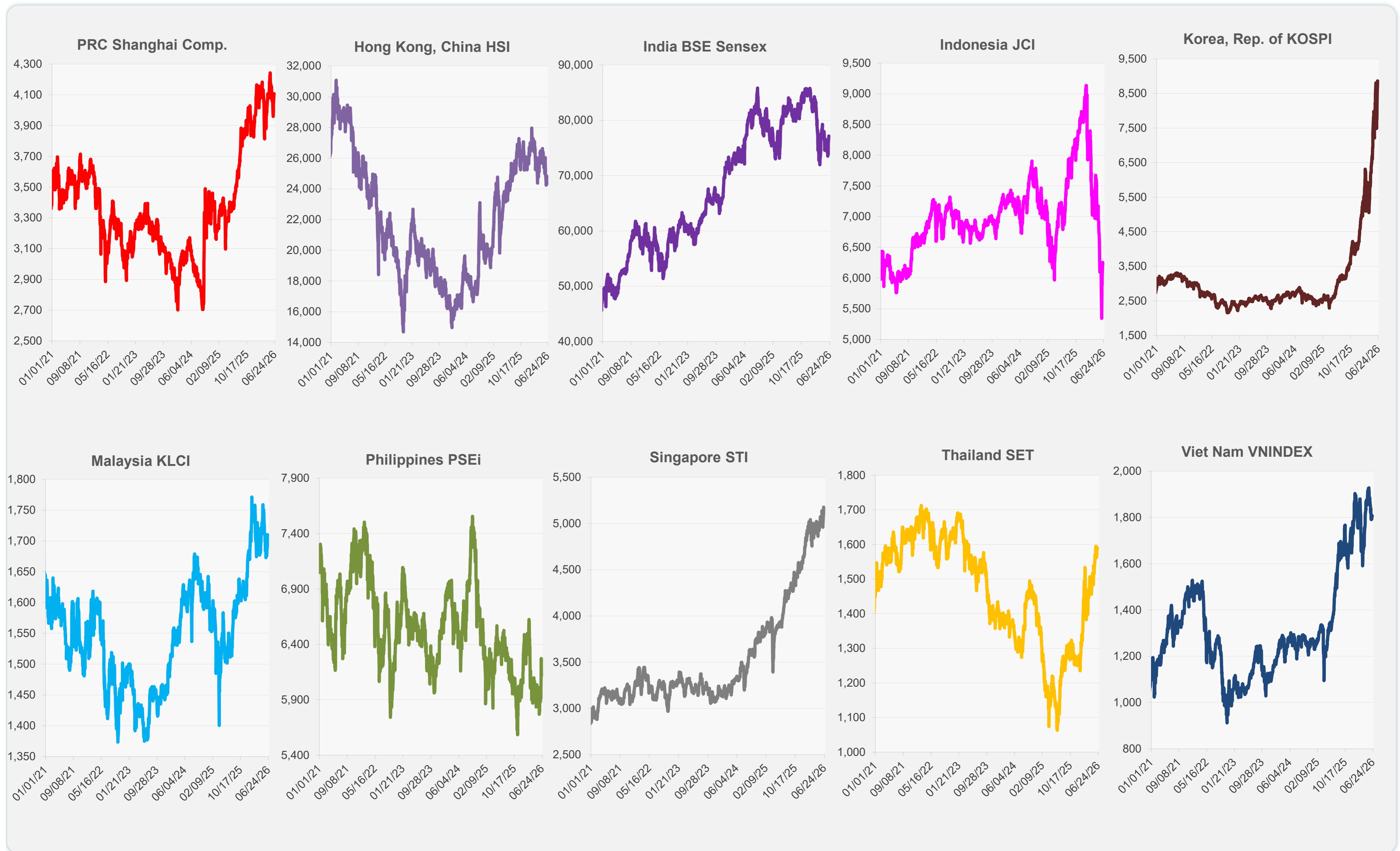
	Latest Closing	% change from Previous Day	% change from 01-Jan-26
US Dow Jones Ind Avg	51,492.55	-0.98	7.13
US NASDAQ	26,021.66	-1.34	11.96
US S&P 500	7,420.10	-1.21	8.39
UK FTSE 100	14,421.15	-0.50	28.06
EURO STOXX 50	6,300.07	0.68	8.78
Japan NIKKEI 225	69,902.25	0.72	38.86
Bangladesh DSEX	5,621.63	0.29	14.48
PRC Shanghai Comp.	4,108.08	0.40	3.51
Hong Kong, China HSI	24,312.16	-0.74	-5.14
India BSE Sensex	77,155.62	0.45	-9.43
Indonesia JCI	6,220.74	-0.55	-28.06
Korea, Rep. of KOSPI	8,864.24	1.58	110.34
Malaysia KLCI	1,709.99	0.00	1.78
Pakistan KSE 100	180,636.90	0.09	2.36
Philippines PSEi	6,114.81	-2.10	1.02
Singapore STI	5,176.46	1.16	11.41
Sri Lanka CSEALL	22,385.91	0.04	-1.05
Taipei, China TWSE	45,877.39	0.15	58.40
Thailand SET	1,587.07	-0.06	25.99
Viet Nam VNINDEX	1,806.20	-0.10	1.22



NIE = Newly Industrialized Economies



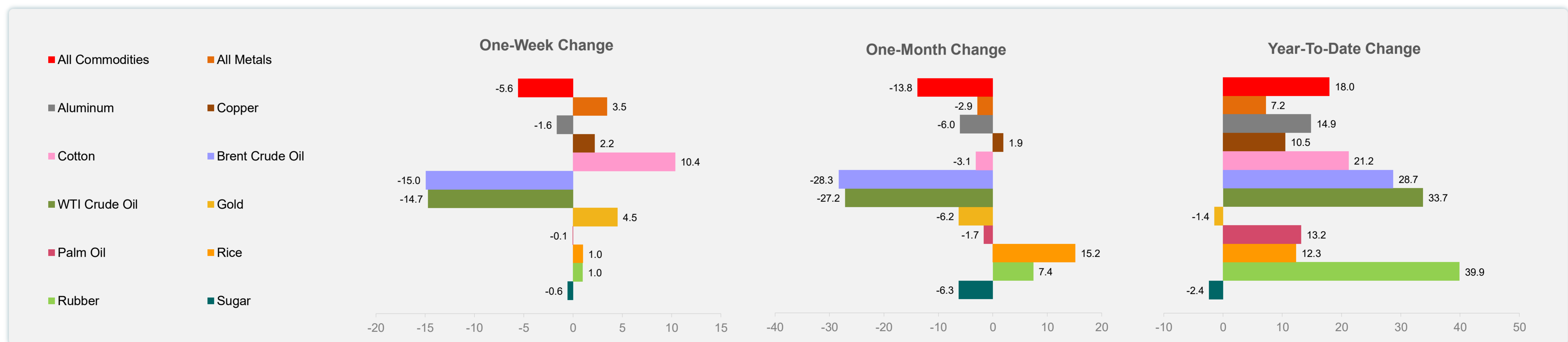
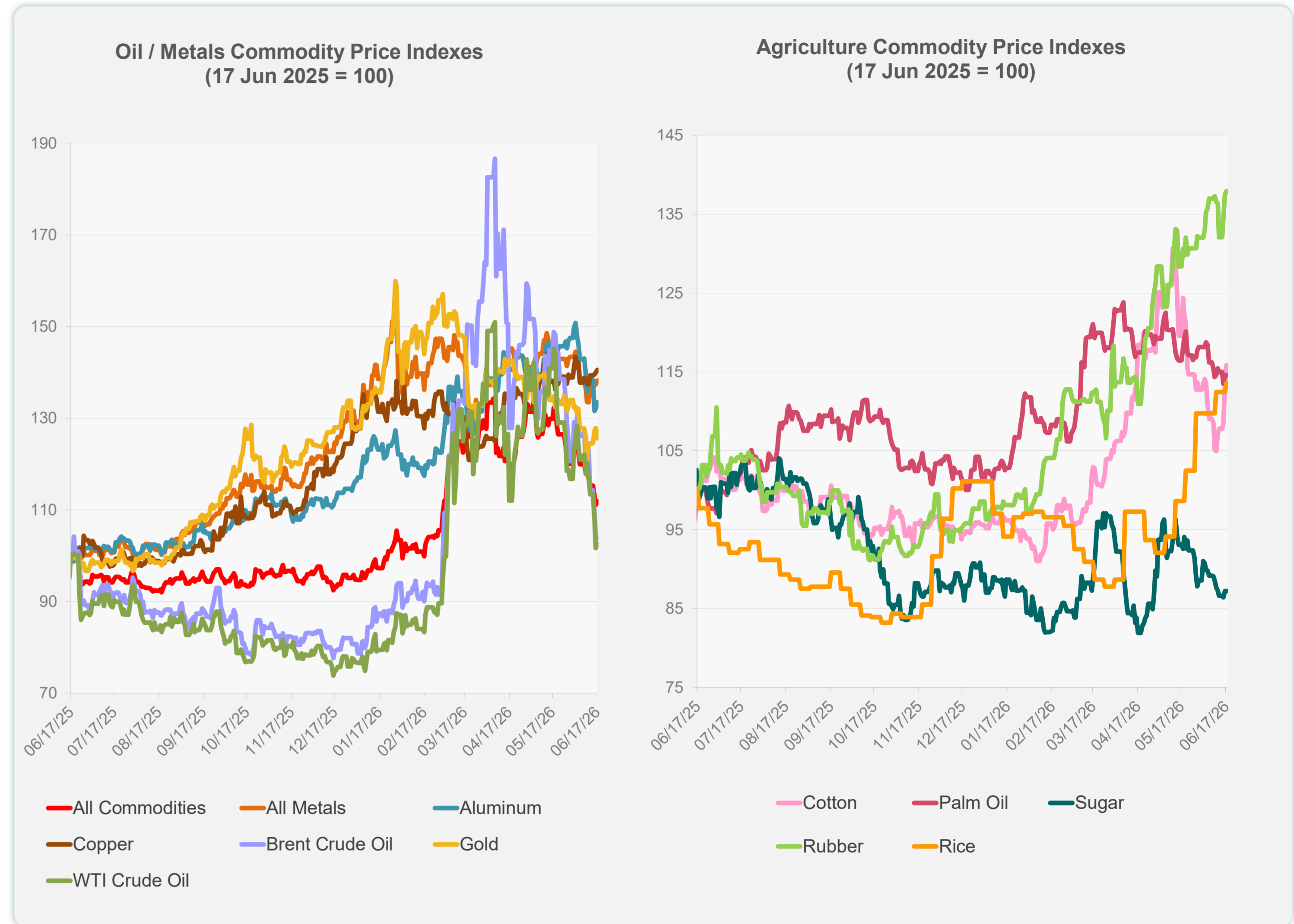
Sources: ADB calculations using data from Bloomberg and CEIC Data Company.



Sources: ADB calculations using data from Bloomberg and CEIC Data Company.

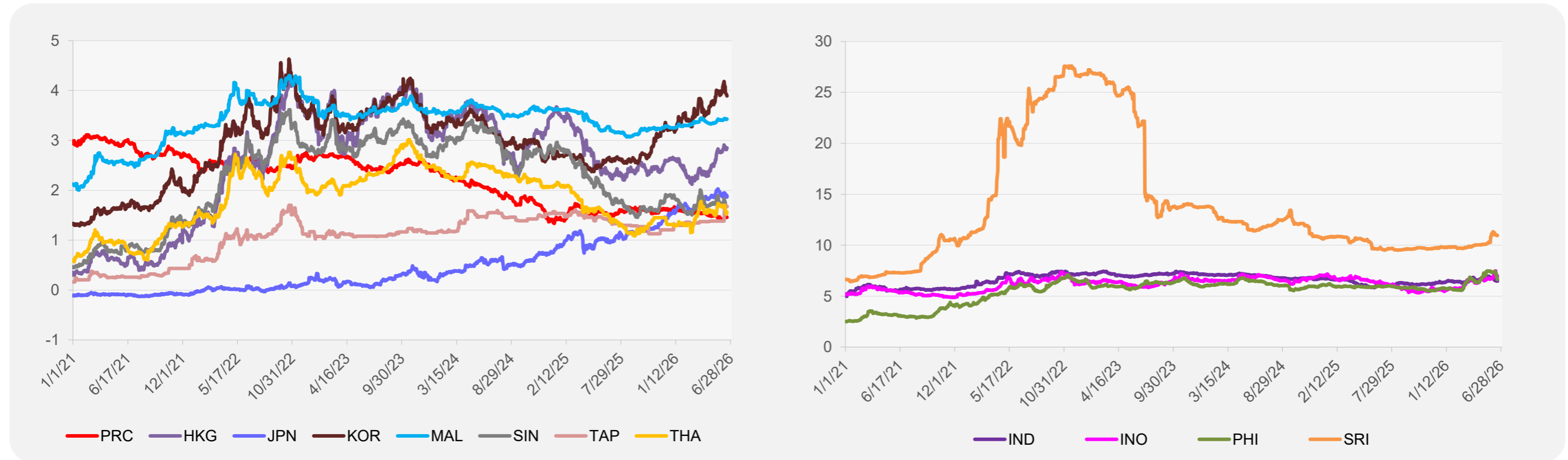
	Unit	Latest Closing	% change from Previous Day	% change from 01-Jan-26
S&P All Commodities	US\$	647.13	0.70	17.98
S&P All Metals	US\$	475.82	0.60	7.22
Aluminum	US\$/metric ton	3,408.98	1.10	14.86
Copper	US\$/metric ton	13,763.45	0.46	10.52
Cotton	US cents/lb	75.17	2.23	21.20
Brent Crude Oil	US\$/barrel	80.38	-0.47	28.72
WTI Crude Oil	US\$/barrel	76.79	0.97	33.73
Gold	US\$/troy oz	4,256.93	-1.71	-1.45
Palm Oil	US\$/metric tonne	1,096.33	0.00	13.18
Rice ¹	US\$/metric ton	501.00	1.01	12.33
Rubber ²	US\$/kg	300.80	0.27	39.91
Sugar	US cents/lb	14.44	0.00	-2.37

¹ Latest closing price from 17 June 2026.
² Singapore Exchange, Ribbed Smoked Sheet Rubber.

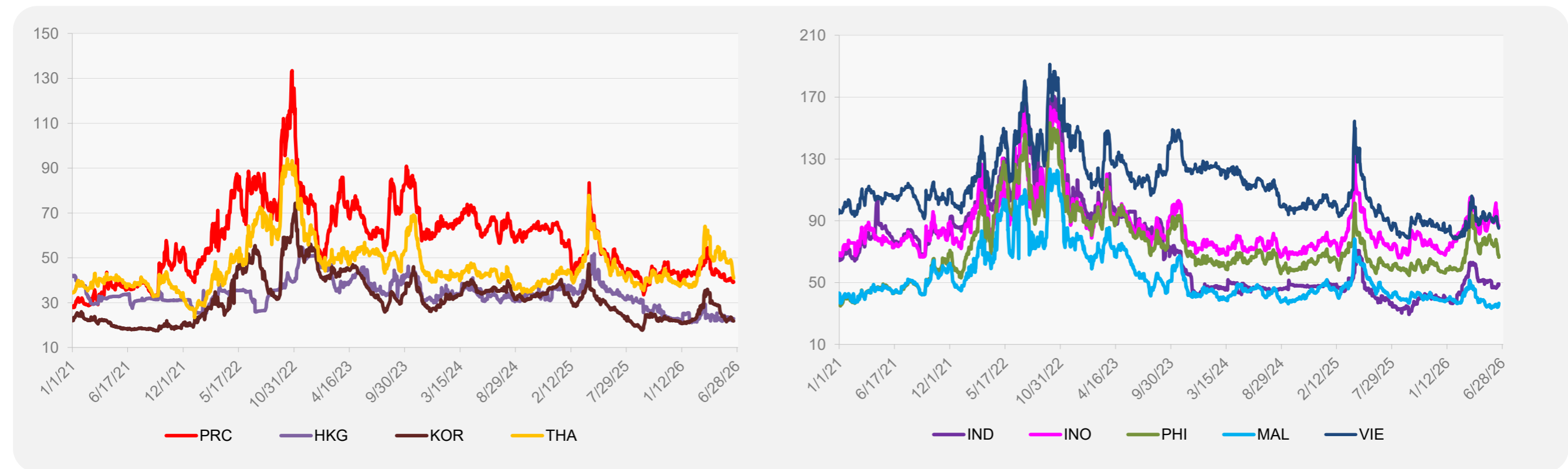


Source: ADB calculations using data from Bloomberg.

5-YEAR LOCAL CURRENCY GOVERNMENT BOND YIELDS (%)



5-YEAR CREDIT DEFAULT SWAP¹



¹ In USD and based on sovereign bonds.
Source: ADB calculations using data from Bloomberg.